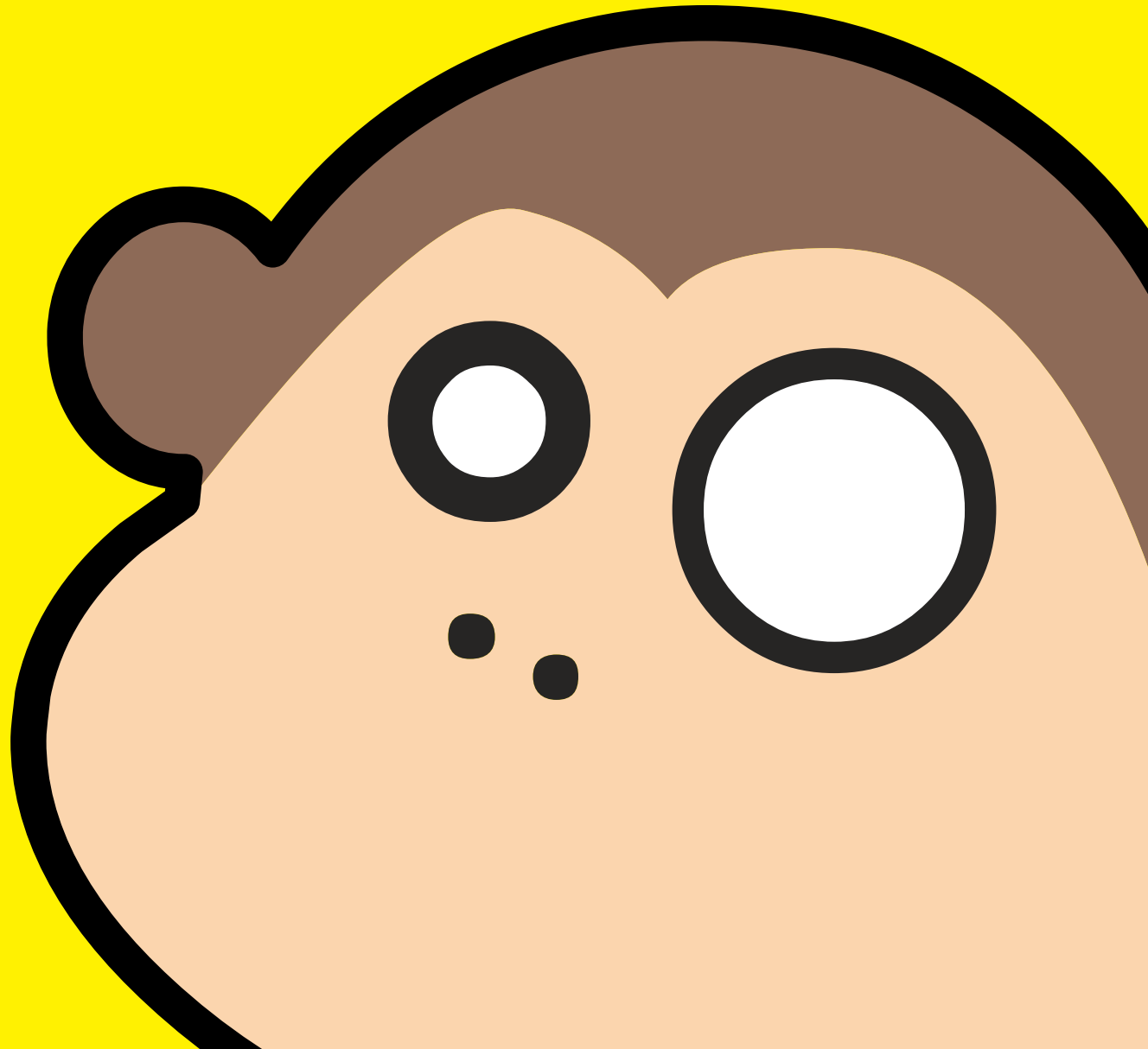


Bananadesign

**Branding.
Graphic design.
Websites.**

And definitely no monkeying around.



About.

Bananadesign is a design and web agency specialising in creating brands, websites and print for charities and small businesses. We don't just do good design we design for good too!

Established in 2000 we have worked with hundreds of clients on thousands of projects. We believe that design can be a force for change and we use our creativity and skills to make a positive difference for our clients and beyond.

Branding.

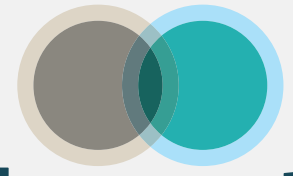
FISH

BLACK

LITTLE

FISH

FILMS



illuminate
words and pictures



STOP
BLOODY
WHALING



Hydrology specialists

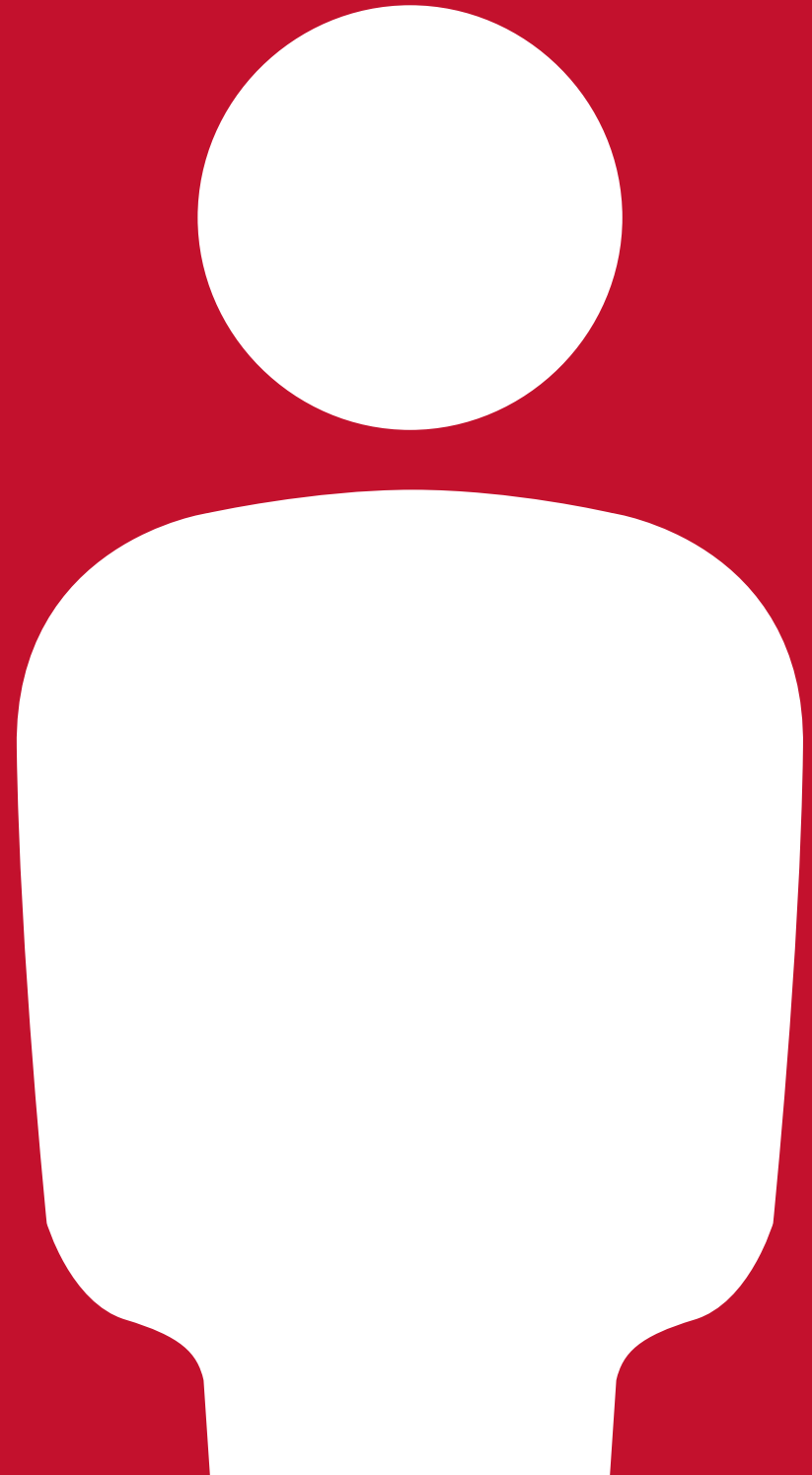
#URBAN
BEACH
CLEAN

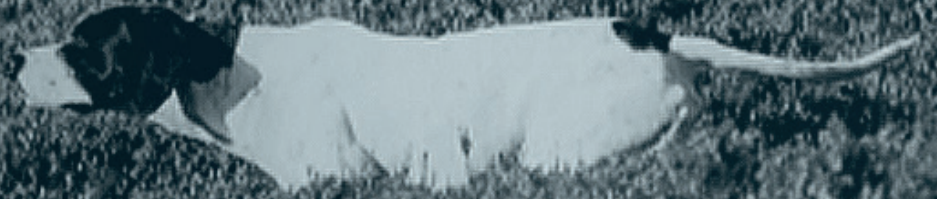
WDC { WHALE AND
DOLPHIN
CONSERVATION



PERSONAL TRAINING FOR STRONG WOMEN

The British Institute of
HUMAN RIGHTS

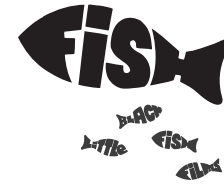




POINTER
ASSET MANAGEMENT



The British Institute of
HUMAN RIGHTS



Central London
**LEARNING
& SKILLS FORUM**
OOOOOOO



Graphic Design.

We are all the same

The results of the AALPHI study

For young people living in England, what is the impact of living with HIV from a young age and taking medication?



A guide to Caring for Life Education

Adapting an existing model for wider use in primary schools



fuelled by CAKE

RECIPE BOOK

In support of

Bliss
for babies born too soon,
too small, too sick

C CANCER RESEARCH UK

 Nightingale House Hospice
Hospis Tŷ Eos

youthunited



ACT
Asia

Influence in our impact

Impact of participating in Embercombe's

Enhance the following?



Key elements



100% feedback



- A Relationship with nature?
- B Self belief in capacity to make change/lead?
- C Your ability to communicate?
- D Your sense of wellbeing and happiness?
- E Your sense of resilience?
- F Your creativity and a creative approach to life?
- G Your ability to network with others?
- H Your ability to initiate and collaborate on new projects?
- I Your ability to get through and overcome difficulties?

- A Nature
- B Community
- C Learning new skills and models
- D Breathwork
- E Ritual
- F Making a pledge
- G Bodywork
- H Food



Young people facilitating change in their worlds



Tove Eriksson, creator of Holding Space, Making Change the July 2016 facilitation course for Catalyst alumni

I started at Embercombe in July 2014, when I arrived in the valley from the Gastonbury Festival. I was 24, having studied for three years at university and after two years in the 'real' world but was feeling slightly lost.

One week after arriving and a Catalyst course under my belt, I made some key decisions in life. I felt overjoyed by spending time with the group and was inspired by Ben and Kanada's facilitation, and something I have later come to describe as a little bit of magic in our otherwise not so magical world.

As I was growing, I was also frustrated at the lack of space to really go into what was happening. How can I manage triggers coming up for me when conflicts arise in groups? How can I learn more about being present with groups and sharing tools with others? Why does this work

matter? Perhaps a better way for frustrated is to say that I was hungry for more. This energy and the accumulation of my questions led to the creation of the Facilitator's Path. Holding Space, Making Change in July 2016.

Eleven Catalyst alumni (young people who have previously done the course) joined on a journey to deepen the strands of the Catalyst, in other words: Nature connection, creative facilitation and peer-to-peer mentoring. My aim with the training was to create a supportive and safe environment where Catalyst alumni could grow.

The Facilitator's Path: Holding Space, Making Change is an exciting addition to the Catalyst Courses - which can't help but create action and life wherever it moves. It has been shown through alumni events after the training and comments from participants, that spaces such as this training play a big role in strengthening the community of people that works hard for a better world for all that live in it. For Tove's full blog see: <https://embercombe.org/the-facilitators-path/>

Our assistant and volunteer programmes

Our residential assistant and volunteer programmes are an exciting and inspiring opportunity to support Embercombe in its work to fulfil its purpose.

Our team of assistants and volunteers is essential to the day-to-day operational delivery necessary to support our work. While this means working hard as part of a team, it is also a great opportunity to live, work and play in a larger community of people - assistants, staff, volunteers, visitors and people - on our programmes, - who seek to practice authentic relationships and develop their own capacity to lead in creating a better world.

Our residential assistants and volunteers come from a diverse range of backgrounds, with each group being comprised of a range of nationalities, ages and gender identities.

'One of the key benefits to being an assistant at Embercombe is the experience of contributing to a pioneering social-enterprise that is at the centre of an emerging future and sending ripples out into the world'. Cindy Wansbury, 2016-2017 assistant

We want to thank all of those who have taken part in our volunteering (3-4 months) and assistantship

(10-12 monthly) programmes. We recognise the contribution, the commitment and the dedication that people make to commit significant periods of time to support Embercombe and we aim to make their experience fulfilling, memorable and transformative.

Antoine Querelhoc, volunteer (with the guitar) 2017

I was a 3-month volunteer in Spring 2017. I very much enjoyed the experience as I met so many lovely and interesting people: the volunteers, managers and the people from the programmes. I really enjoyed this experience as I learned so many things about myself and about what I really want to do in my life in the future. I particularly enjoyed sharing with others - learning from them and sharing what I knew - and especially learning how to work with the land. A highlight for me was having the opportunity to share that opportunity and learning with young people.

Did you know?
27% of our volunteers in 2016-17 came from outside the UK



Financial information



Our vision, mission and guiding principles

Our **vision** is for all of us to be living in the world of our longing.

Our **mission** is to be a powerful and innovative catalyst for the emergence of leaders and change agents who will take courageous action for a just, peaceful, and sustainable world.

Embercombe's five guiding principles

The Children's Fire
The Children's Fire is part of the Earth teachings of the elders of early America. Over time the elders came to understand that all human actions needed to reflect the balance and wisdom observed in nature. The Children's Fire is the heart of Embercombe, a reminder of the first promise: No law, no action of any kind, shall be taken that will harm the children seven generations hence.

The Twin Trail
By uncovering our true gifts, responsibilities and passions we are able to bring ourselves fully to the world, leading ourselves and others on a path of positive action. At Embercombe we invite people to follow the 'twin trail' of inner healing and spiritual deepening, with outer action to change the world.

Connection
Connection to nature, community and ourselves underpins everything we do at Embercombe. By connecting to the very essence of what it means to be human, we will be more effective communicators and leaders for change.

Sustainability
Living and working sustainably is at our essence. On the Embercombe land we grow much of our own biodynamic food, managing our waste using compost bins and supporting our electricity use with solar power. We continually strive to become more sustainable and every year brings new ideas and progress.

Community
We seek to build a community where we live and work in an authentic and courageous way with each other. Our community is formed of our on-site volunteers, assistants and staff, and far beyond the Embercombe gates interested in our work, with whom we engage directly or indirectly.



The Trustees are pleased to present their annual report and financial statements of the Trust for the year ended 31 March 2017. The financial statements have been prepared in accordance with the accounting policies set out in note 1 to the accounts and comply with the Trust's memorandum and Articles of Association, the Charities Act 2011 and Accounting and Reporting by Charities: Statement of Recommended Practice applicable to charities preparing their accounts in accordance with the Financial Reporting Standard applicable in the UK and Republic of Ireland (FRS 102), which was published on 16 July 2014.

About Embercombe
Our mission is to be a powerful and innovative catalyst for the emergence of leaders and change agents who will take courageous action for a just, peaceful, and sustainable world.

Embercombe was founded in 1999 by Mac Macartney, an international speaker, writer and change-maker, with a background in training and development. Mac's experience of being mentored by Native Americans informed the development of Embercombe, particularly the practice of the Children's Fire and walking the Twin Trail of inner work and outer action. Embercombe was born as a place to grow leaders, to offer us the opportunity to reconnect to who we really are and what the world needs from us, to develop ourselves as the courageous, resilient and connected caretakers of the future.

Reference and administrative details
Registered Company number 5943952 (England and Wales)
Registered Charity number 116793

Registered office
Embercombe
Higher Ashton
Exeter
Devon
EX6 7GQ

Trustees
Tim Macartney
Charles Anderson
Ruth Dobson Treasurer (appointed 23.09.2017)
Victoria Hands ex-Chair (resigned 23.09.2017)
Andrew Rose ex-Treasurer (resigned 23.09.2017)

Bank
The Co-operative Bank
Snettisham
WNG 6WT

Contents

- Section One Our mission
- 4 Our vision, mission and guiding principles
- 6 Report from the Chair
- 7 Giving thanks
- 8 Our core leadership
- 10 What we achieved
- 11 Embercombe's year in review
- 12 Making a difference
- 13 Young people for the future
- 14 Our assistant and volunteer programmes

Section Two Financial information

- 15 Financial review

Protecting WHALES & DOLPHINS around the WORLD

WHALE AND DOLPHIN CONSERVATION
WDCS



**COULD YOU SPARE
£1 A DAY TO HELP AALEYAH
FEED HER FAMILY?**

Orphans in Need

STOP BLOODY WHALING

It's time to act!

WDCS
Whale and Dolphin Conservation Society



OXSRAD

The integrated sports and leisure centre



OXSRAD is a welcoming place where people of all abilities come together to enjoy sports and recreation

YOUR HOME FROM HOME

Swarthmore Care Home offers high quality residential care and support to older people at an important time of their lives.

We are a small community which residents feel part of, as well as being able to maintain their privacy and individuality.

We are able to offer 40 places for residents with a wide variety of needs, this includes care for those with varying degrees of cognitive impairment. For those who are fully independent we have a choice of either living in the main house or in one of the assisted living flats in the grounds.



"We would like to thank all the wonderful staff who care for my mother. She is extremely happy at Swarthmore and enjoys all the attentive and helpful attention she receives."

We have activities and events every day and we organise regular trips out. Swarthmore is a large house and residents can choose to be at the centre of things or enjoy their own company. For those who wish to do their own thing we have a library, TV room, a dedicated quiet room as well as two acres of beautiful landscaped gardens.

The Home is in the small historical town of King's Cross, which is just half-an-hour from London.

TRUSTED SUPPLIERS

NCVO's Trusted Suppliers can work with your organisation to change the way you buy, offering products and services to support your organisation's operations that will save you money and make you more effective.

- Insurance cover specifically designed for charities and social enterprises
- HR advice including free helpline for members, tailored support, guides and templates
- Recruitment for all your employee, trustee and executive vacancies
- Employee support payroll, pensions, childcare vouchers and healthcare
- Utilities cut costs on your telecoms, gas and electricity
- IT software, hardware and cloud solutions to capitalise on developing technologies.

FIND OUT MORE

Please contact us to discuss your next event requirements.

ncvo.org.uk/conferencesuite
conferencesuite@ncvo.org.uk
020 7520 2404



20
exclusive

VENUE HIRE

Our conference suite is a versatile venue for all your events.

- Beautiful canal-side location
- Facilities for 2-120 delegates
- Open seven days a week
- Short walk from London King's Cross
- Accessible rooms
- In-house catering
- Experienced conferencing team



NCVO
members pay
20% less on
room hire



Websites.



Lucy Marcovitch
EDUCATION WRITER & CONSULTANT

[About](#) [Services](#) [Work](#) [Contact](#)



Hello, I'm Lucy Marcovitch.

I am a writer and educator with over 20 years' experience. My services include PSHE consultancy, education resource production, copy-writing and editorial.

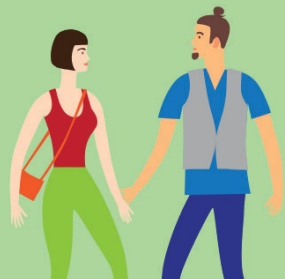
[Get in touch](#)



Consultant, writer and educator

My career has included classroom teaching and teacher training, writing teaching resources, designing the curriculum, and advising and leading on national education policy. I've worked in the public sector, for charities and with commercial clients.

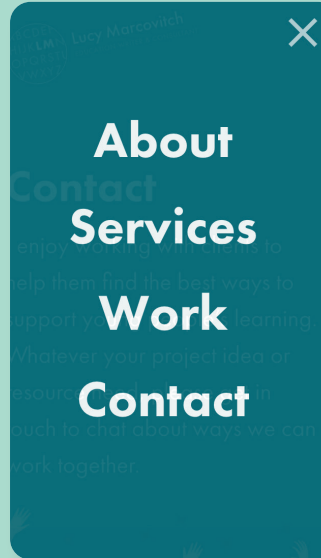
I specialise in primary Personal, social, health and economic (PSHE) education, but I also work in other areas of the curriculum, and not just in education – I've written for all kinds of websites, blogs and newsletters, and had two children's picture books published.



Education services

I have been a **government adviser** for the curriculum and **subject specialist** at the PSHE Association, and am used as an **expert contractor** by Ofqual and the Standards and Testing Agency (STA). I have many years' experience creating teaching and learning resources in print and digital formats, from initial concept to final draft.

[Find out more](#)



About
Services
Work
Contact

Work

I've worked with many different clients, each with their own aims and interests, but united in wanting to produce the highest quality teaching and learning resources to meet young people's needs.



Clients and projects

I've been lucky enough to be involved in many fantastic and interesting projects – here are some of my favourites:





Stories matter. Humans have connected through words and pictures since time immemorial. Stories touch our hearts in a way that nothing else can.

Every successful speaker, every classic novel, every great film, every thought-provoking article depends first and foremost on a strong narrative. Illuminate helps you find your voice with beautiful photos and authentic testimony, enabling you to tell your story with emotional resonance and depth.

We are a small, friendly and specialised story gathering agency. We visit your programmes and return with the words and pictures that capture what is unique about your organisation, the people you work with and the causes you support.

Illuminate is [Cat Vinton](#), pictures, and [Maria Padgett](#), words. We'd love to [hear from you](#).

Sink or Swim

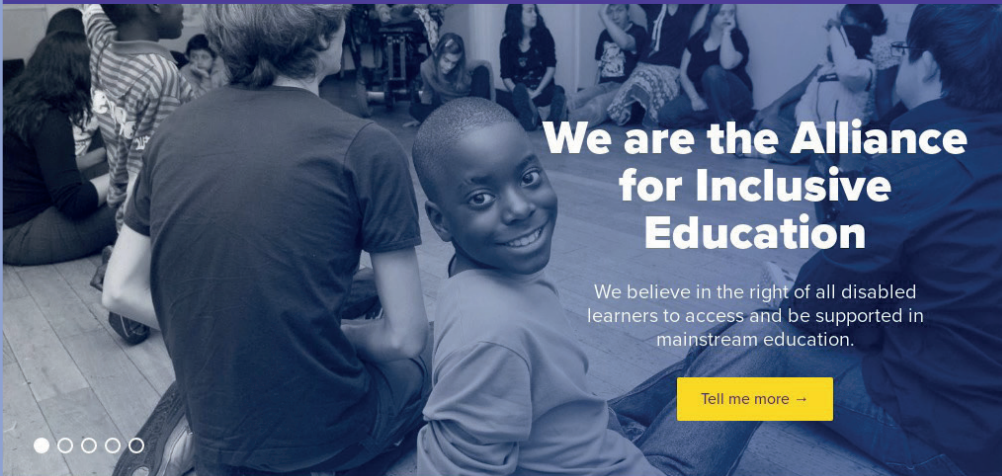
More than 1 million tourists visit the Maldives each year, travelling thousands of miles to enjoy pristine beaches and world class diving. Yet despite living in an island nation, many Maldivian children have never witnessed the wonder of their own coral reefs.



Myanmar Stoves Campaign

Indoor cooking on inefficient stoves is a silent killer in developing countries such as Myanmar. Globally, air





We are the Alliance for Inclusive Education

We believe in the right of all disabled learners to access and be supported in mainstream education.

[Tell me more --](#)



News

38 DEGREES

people. power. change.

More than 100,000 people sign ALLFIE's petition

We've been blown away by the response to our petition on 38 Degrees: **Don't shut Disabled people out of mainstream education.** You're telling government clearly that they must provide the support Disabled children need to thrive in mainstream. Cuts which affect Disabled children's equal participation in education are not acceptable.

A huge thank you to everyone who has signed. If you haven't signed the petition yet, [please sign and share it with friends and family.](#)

Please come and join us at 10 Downing Street where we will be delivering our petition to Boris Johnson at 12' 0 clock noon on Thursday 23rd Jan. [Click here](#) for more information.

[Let's make it happen - sign the petition now. --](#)

ALLFIE'S MANIFESTO

Stand up for inclusive education!

The manifesto sets out our six demands for inclusive education. Find out what they are and add your name or the name of your organisation.

[Sign our manifesto --](#)



Definitions



Inclusion Now Magazine



Inclusion FAQs

News & Briefings

Here you'll find all our news items: [blogs](#), [member and parliamentary briefings](#) and [consultation responses](#), as well as our termly magazine, [Inclusion Now](#).

Follow us on [Twitter](#) or [Facebook](#) to stay up to date.

Inclusion Now magazine

[See all -->](#)

Inclusion Now 55 Spring 2020

SEND funding crisis, international inclusive practice, ALLFIE's national Day of Action and more.



Inclusion Now 54 Autumn 2019

Intersectionality, UN Sustainable Development Goals, Disability History Month and more.



Inclusion Now 53 Summer 2019

Visit to West Lodge School in Harrow, lots of campaigning news including a report from the SEND Crisis march, an update on the Timpson report into school exclusions and much, much more.





A hidden gem
Waiting just for you

A luxury chalet in the heart of the Portes du Soleil

A beautifully furnished, well equipped chalet with 4 double bedrooms, a hot tub and a balcony. The chalet sleeps up to 8 people and is children and dog friendly too!

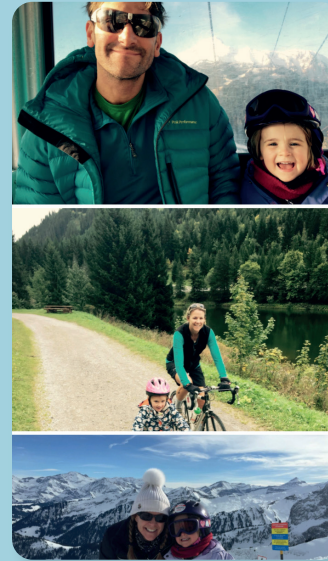


[Book Now](#)



Our family had the most amazing time. Everything was just perfect, thank you so much!

— Laura, UK



Rooms

200m² floor space
Sleeps up to 8
4 bedrooms
2x double beds
2x twin beds
Plus a mezzanine with futon and room for a cot (supplied)
2 bathrooms
Balcony



Facilities

Well equipped kitchen with oven, microwave, coffee maker, dishwasher
Towels and linens provided
Hot tub
Log fire
DVD player
Satellite/Cable TV
Kids toys
Parking
Wifi



Activities

Skating and snowboarding
Mountain biking
Hiking
Mountain climbing
Whitewater rafting
Horse riding
Walks



Nearby

2 minutes to the ski lift in Chapelle d'Abbondance
Children's playground
Village shop
Pretty churches
A short drive to Chatel





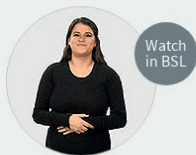
About us

Training and support

Campaigns and policy

Disability in London

We support Deaf and Disabled people's organisations in London and campaign for equality for Deaf and Disabled people



Inclusion London Annual General Meeting (AGM)

19 February 2020. Find out about our work over the past year and our plans for the future.



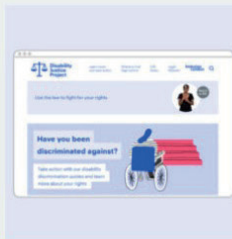
Training and events - NEW

Free training and events for DDPOs. Book your place now.



Making It Work Project launch 3 new films

The films tell the stories of young Disabled people at work and encourage employers and colleges to get involved.



Learn what your rights are and how to fight for them

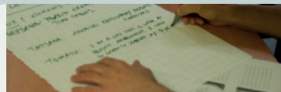
The only way we can stop discrimination is by challenging it. Our Disability Justice guides will help you.

Inclusion London supports over **70** Deaf and Disabled People's Organisations in London ...

who provide services to **over 76,000** Deaf and Disabled Londoners

... and have a combined annual turnover of over **£24 million**

[Learn more about our sector](#)



Planning your campaign



Using the Media



Training and support

We run a range of capacity building projects to help build the skills, knowledge, and sustainability of DDPOs in London.



Coronavirus crisis

[Information and resource updates for DDPOs during the current emergency](#)



Partnership working



Leadership and business support



Information and resources

Latest news





Coronavirus: the deadly consequences

of our continued exploitation of animals

[Find out more →](#)

We believe that respect for people, animals and the environment will lead to a more compassionate and sustainable world.

The global outbreak of COVID-19 is a direct result of human exploitation of wildlife. Changes to the Wildlife Protection Law in China are on hold until later this year. We believe any changes must be supported by public education.

Please consider donating so that we can continue our work.

[DONATE →](#)

What we do



Children's education



Consumer



Professional

We couldn't do it without your support

It's only through the generosity of our supporters that we can continue our programmes in Asia, and offer education to children, consumers and professionals. Please donate to help us progress our work.

£ 10.00

£10.00

£30.00

£100.00

Other

Monthly Donation



Teaching compassion

Over 65,000 students have taken a Caring for Life Education course

[Help our work](#)



Bananadesign Ltd

The Old Cable House
Leighton SY21 8HJ

www.bananadesign.co.uk
ripe@bananadesign.co.uk
01938 556266

Registered company number: 06119615.
VAT registration number: 787 9039 65.

